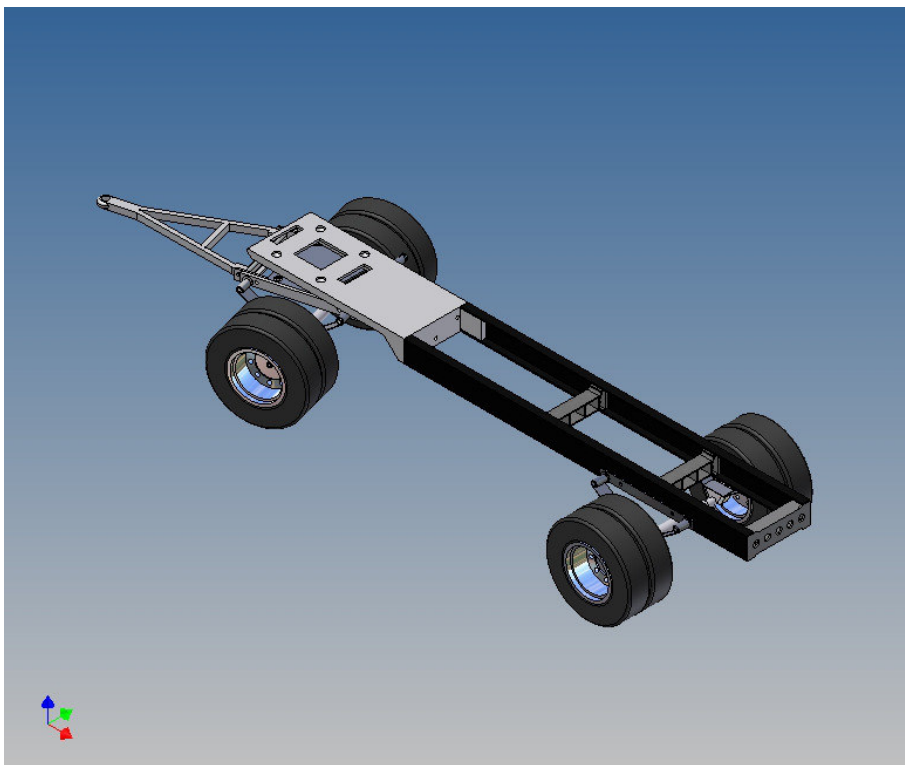


Assembly Instruction

**Trailer kit for twin-wheels
for TAMIYA Trucks (1:14)**

Best.-Nr.: 2017-8522-xTD



Version 1.0 – 30.06.2017

General Description

This parts set for a trailer as an accessory was designed for the TAMIYA Trucks (1:14).

The complete rotary tool unit, the drawbar, middle and end beam as well as the leaf springs consist of high-strength PLA (3D printing).

The aluminum axles come from own production and are designed for Tamiya's twin-wheel rims.

The kit contains 2 frame profiles (l = 33cm) and a turntable.

For the drawbar are 2 different drawbar eyes (for Carson / TTM / Wedico) enclosed.

In order for this trailer to be designed individually, all drilling holes must be drilled in the rear frame part, at its own discretion. For this purpose, a drilling template is provided for the spring elements, front / middle and end traverses.

Total length with drawbar: 62,5 cm

Total frame length: 48,4 cm

Frame width: 6,2 cm

Hook height: 7,8 cm

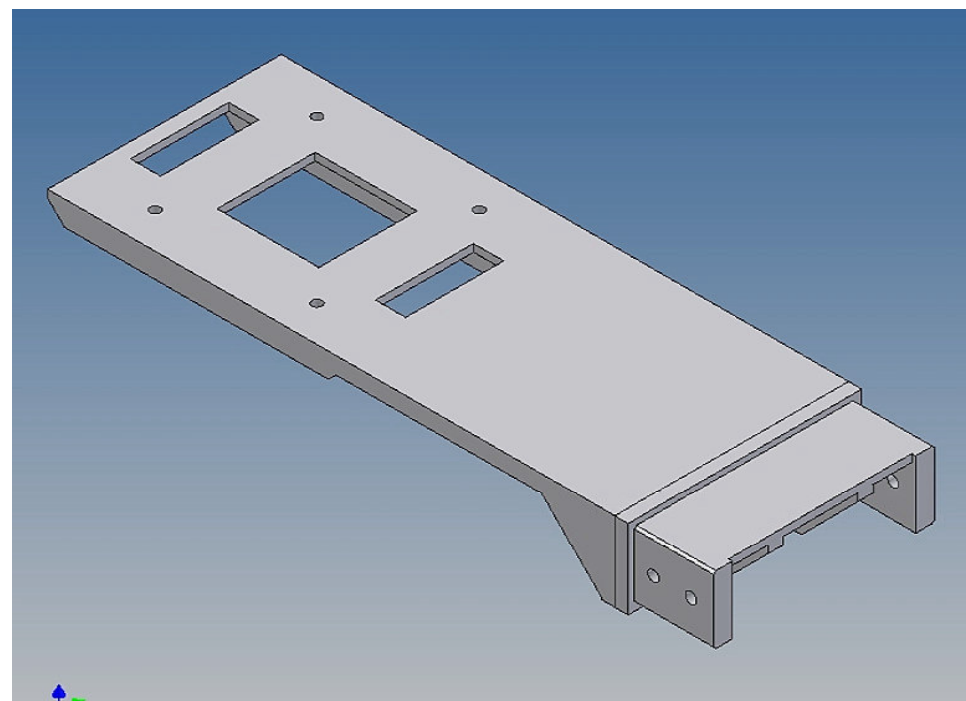
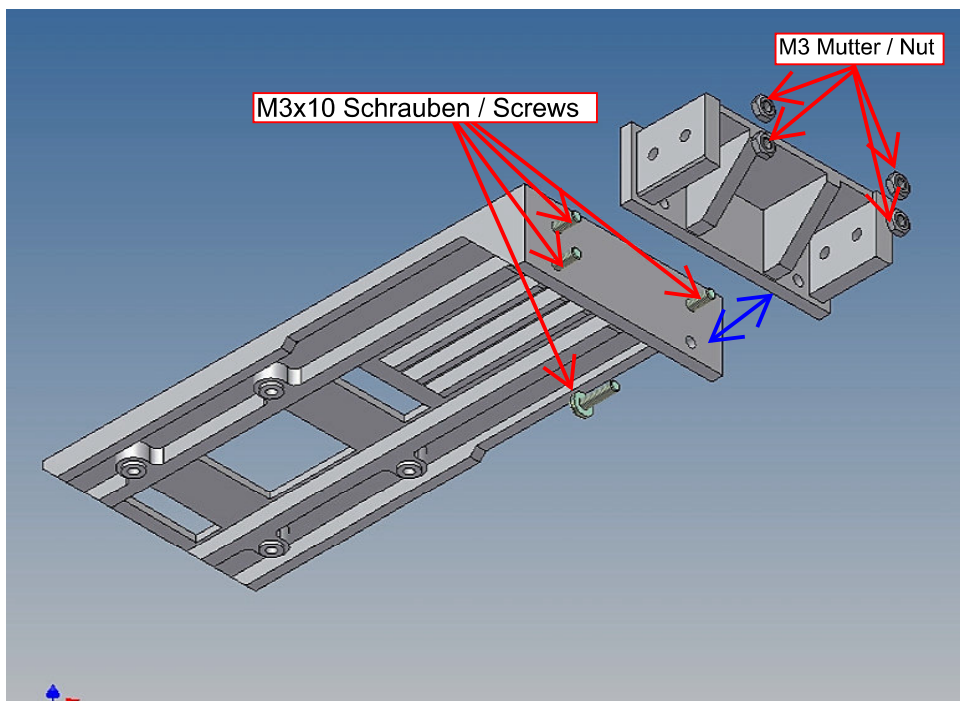
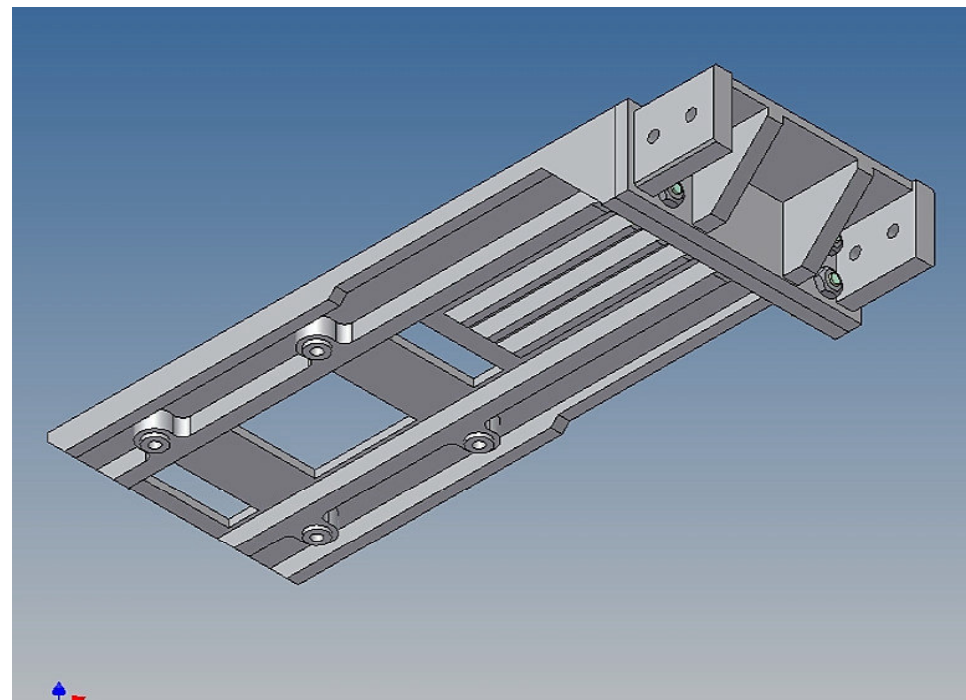
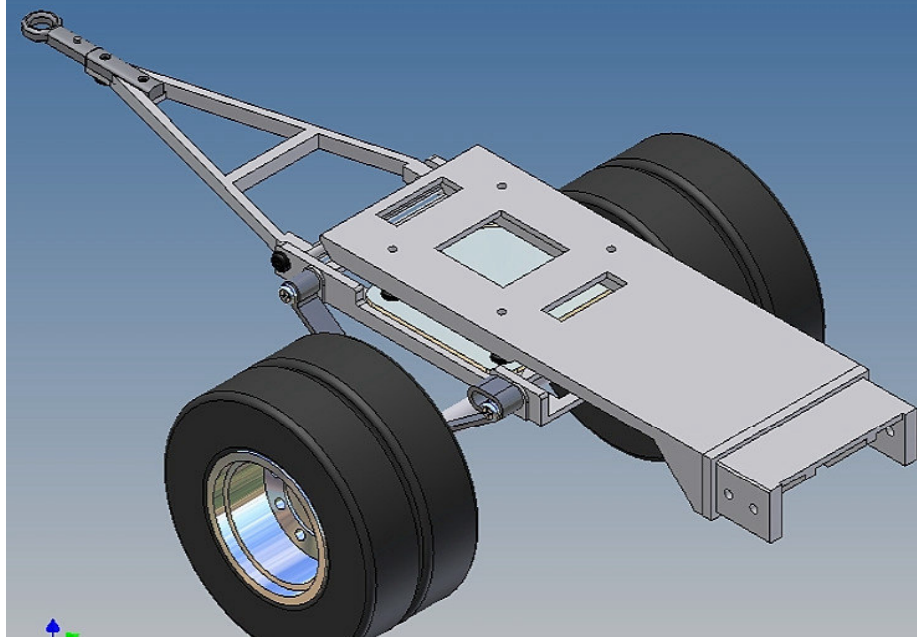
Frame height above stand area: 9,3 cm

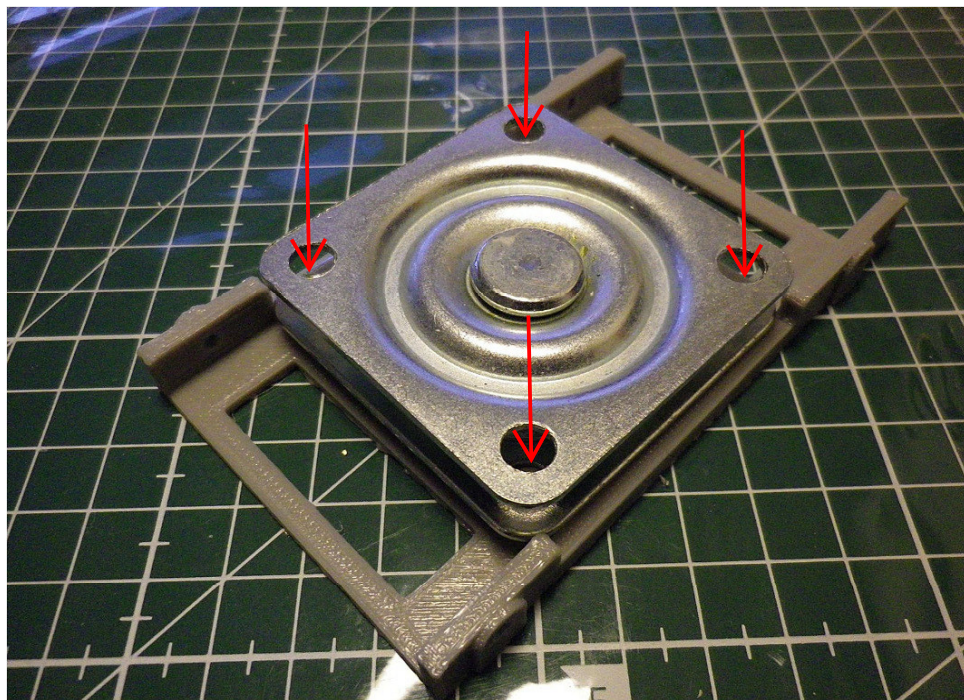
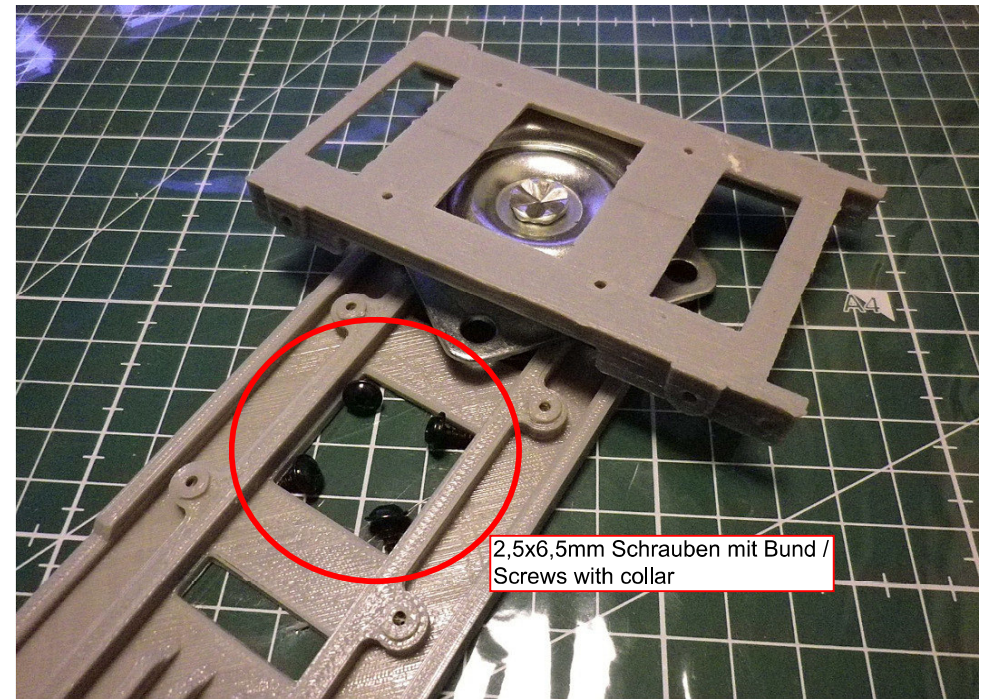
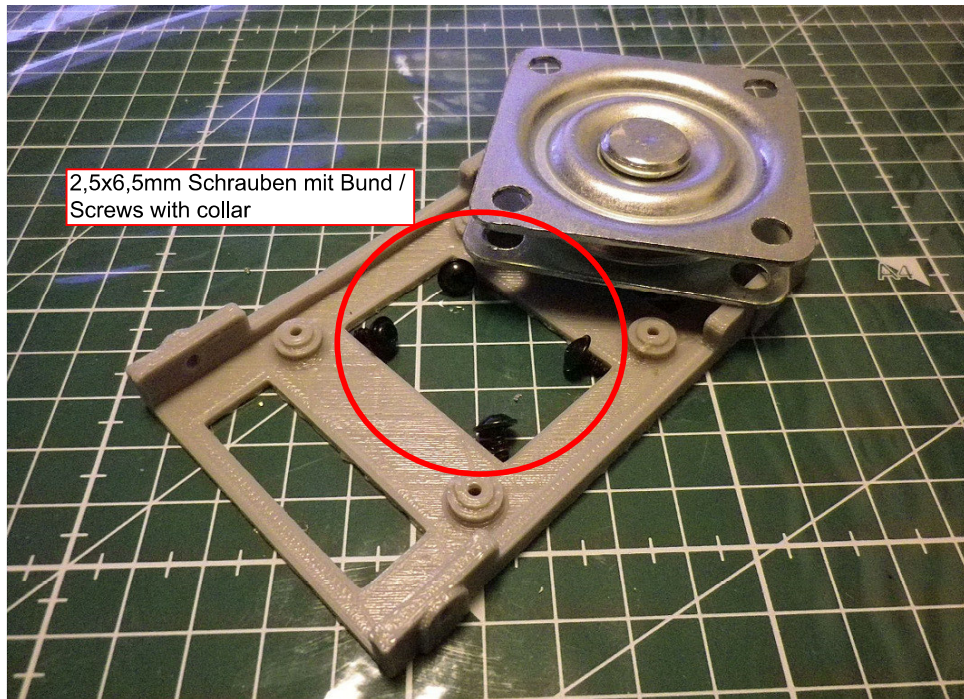
Assembly Procedure

Before you put the parts together please read the assembly instructions carefully and pay attention to the assembly sequence and test the fitting accuracy of the parts before gluing them together.

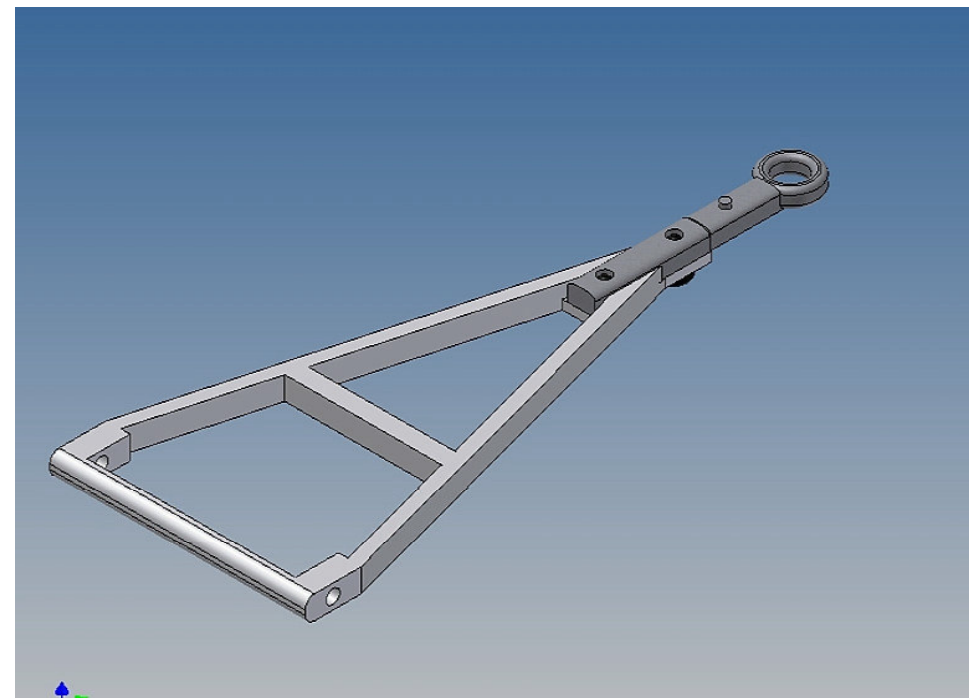
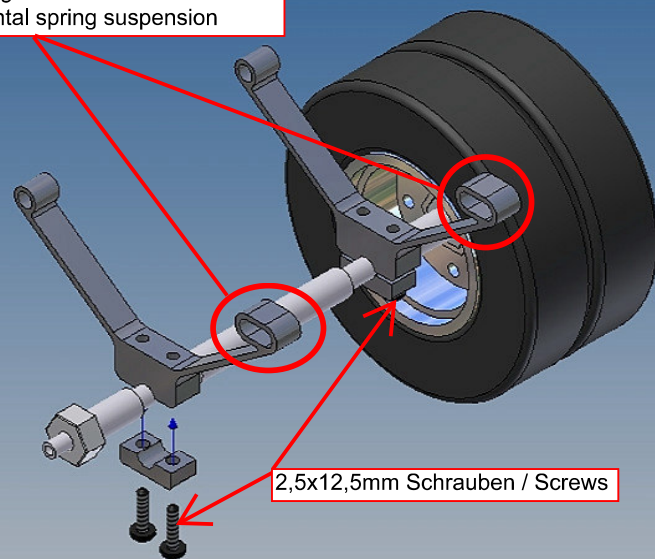
The post-processing of the PLA parts is left to each model builder himself, depending on the accuracy of the fit.

Baustufe 1 Drehgestellrahmen / Step 1 Bogie frame

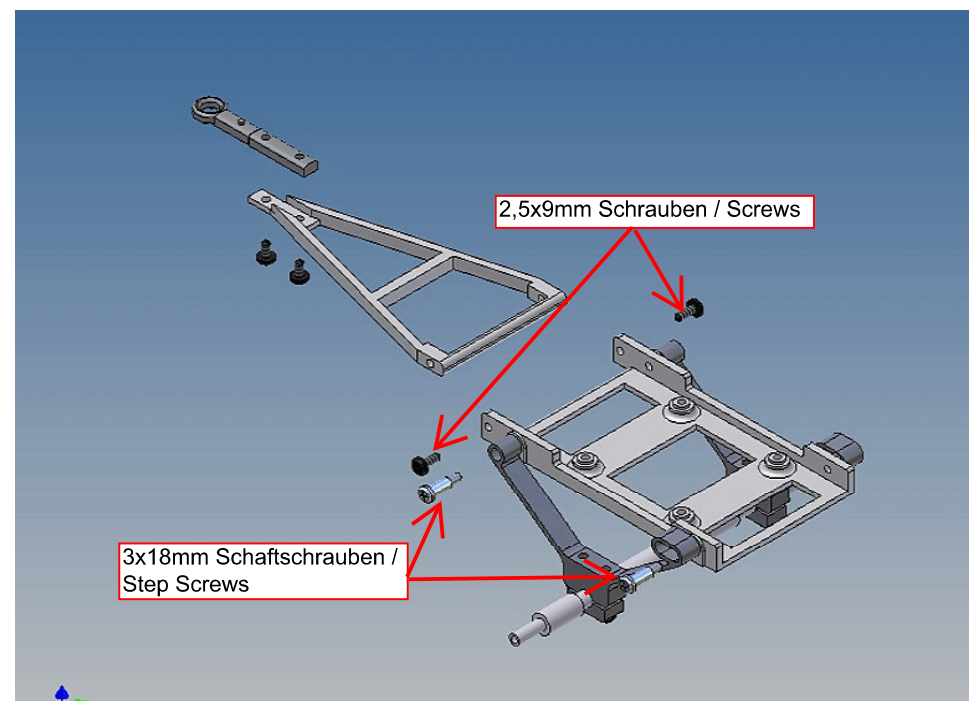
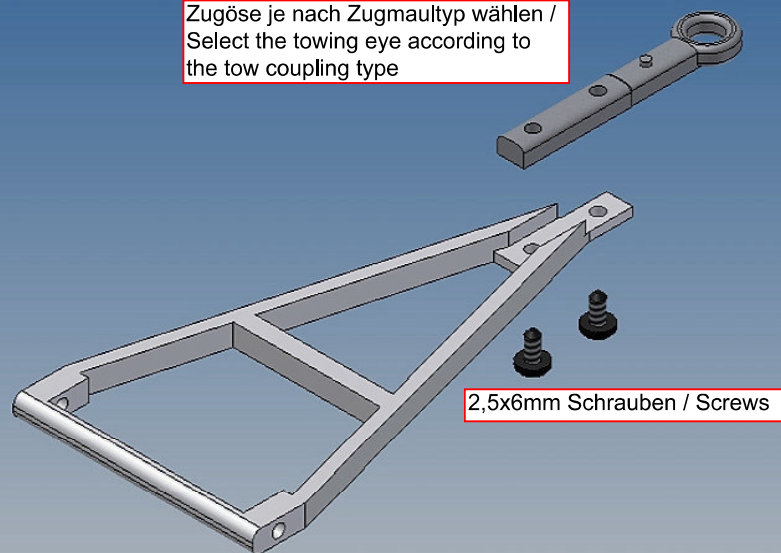


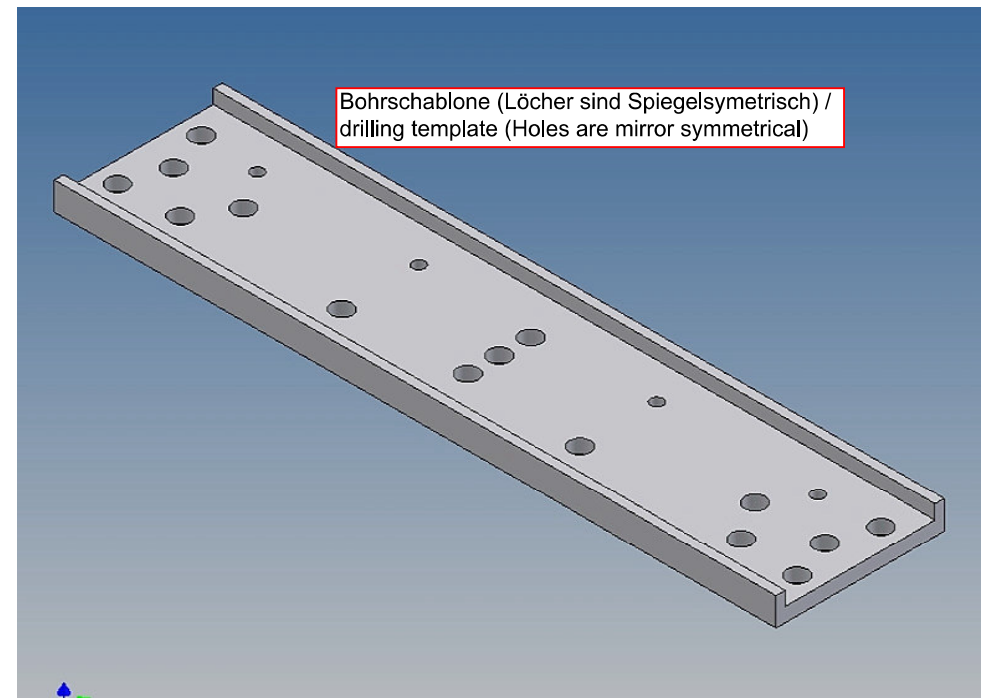
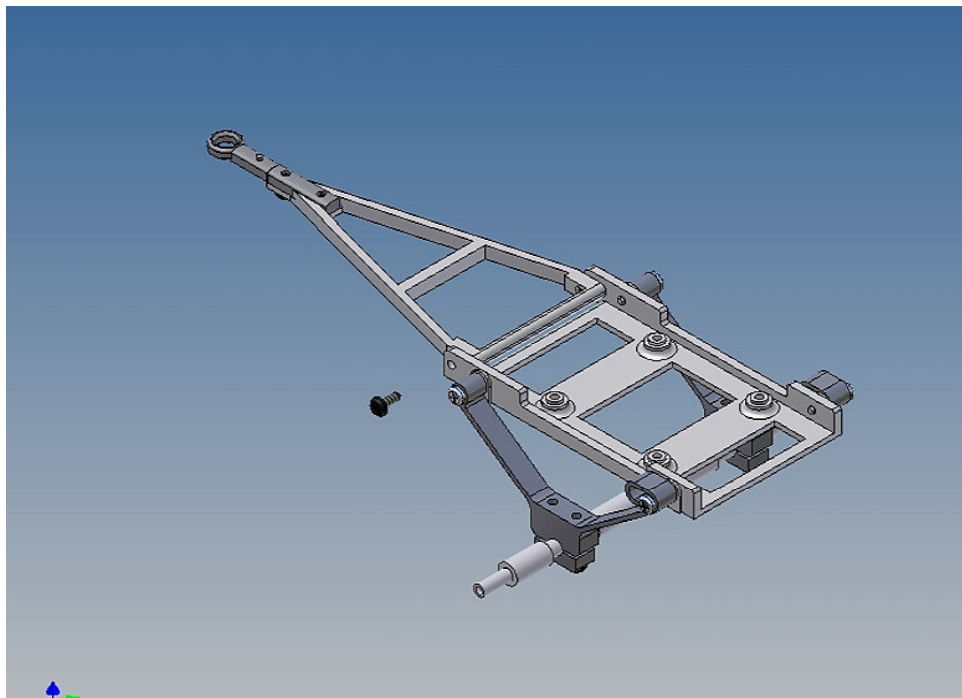
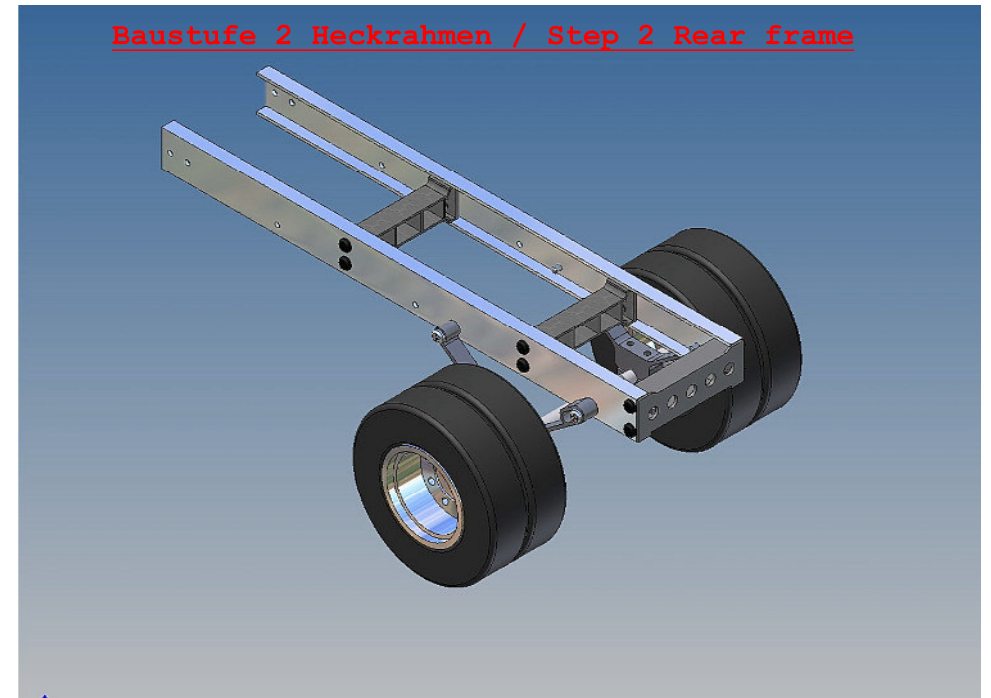
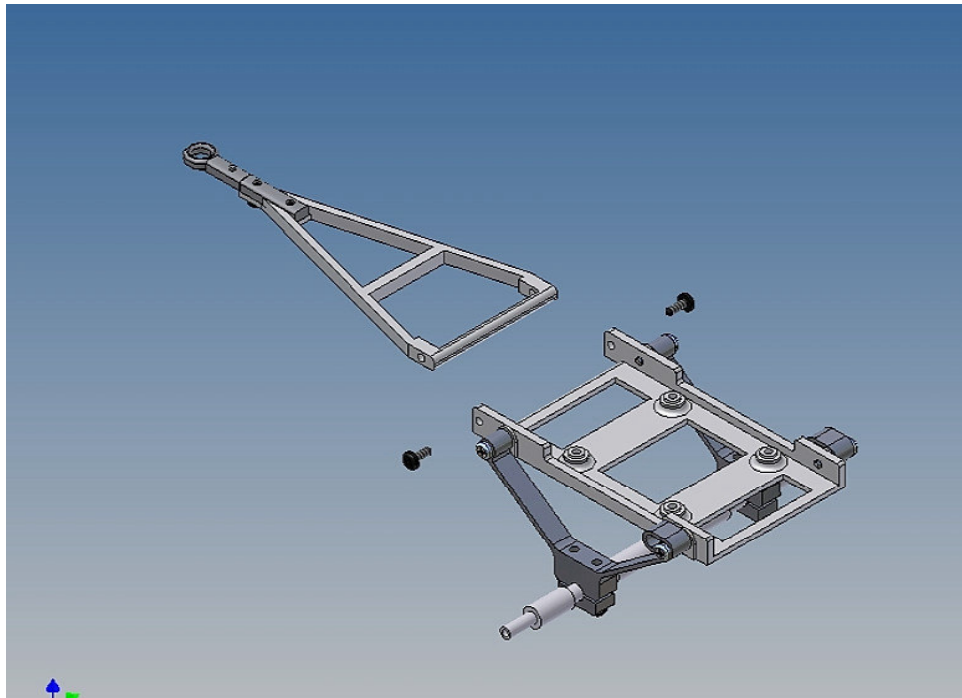


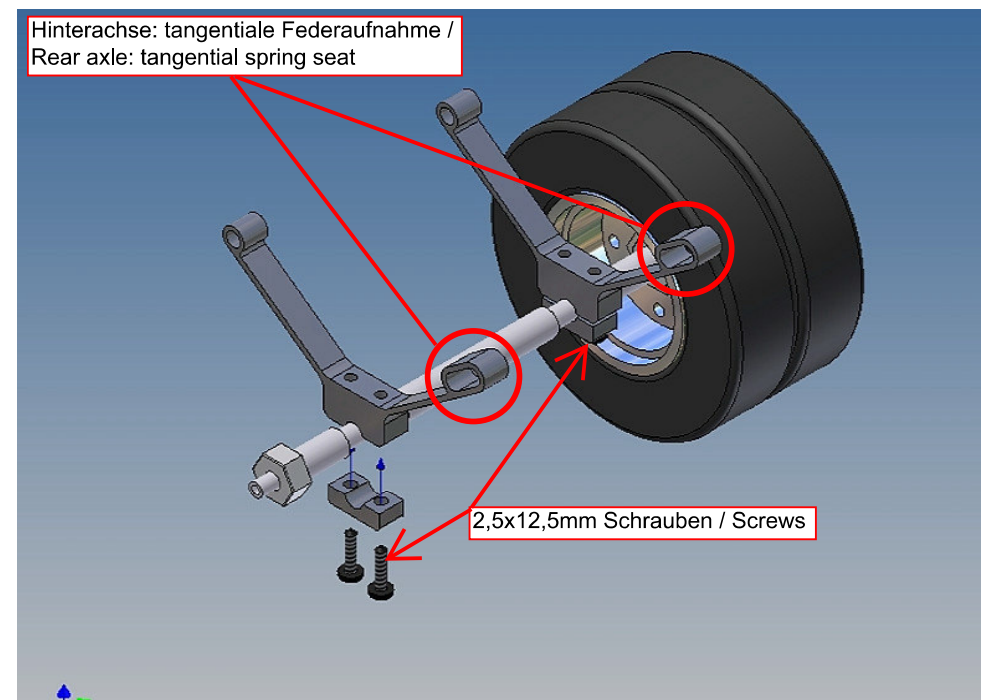
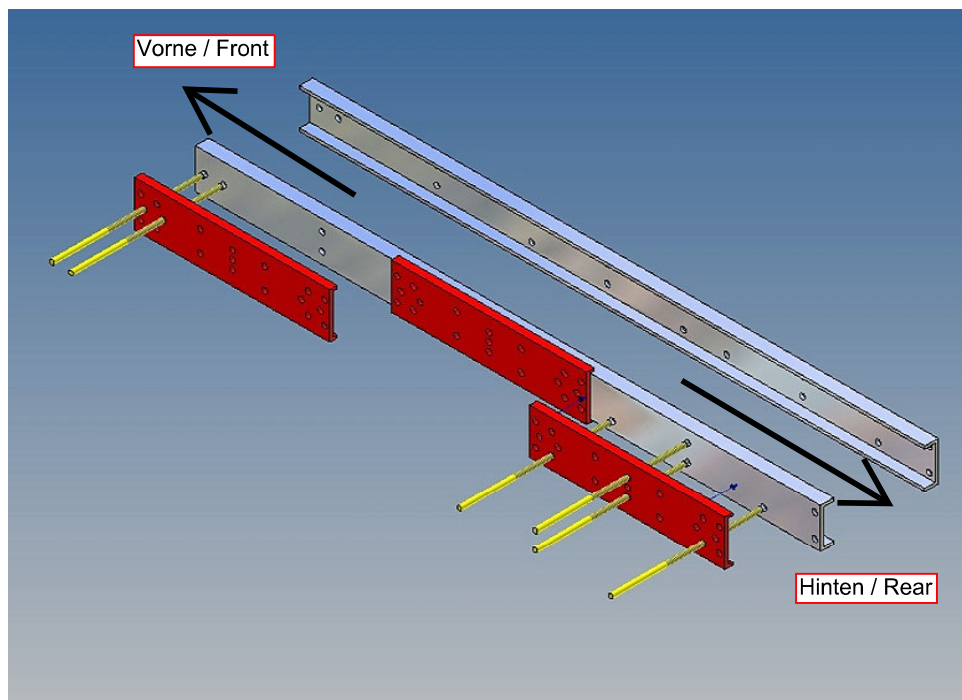
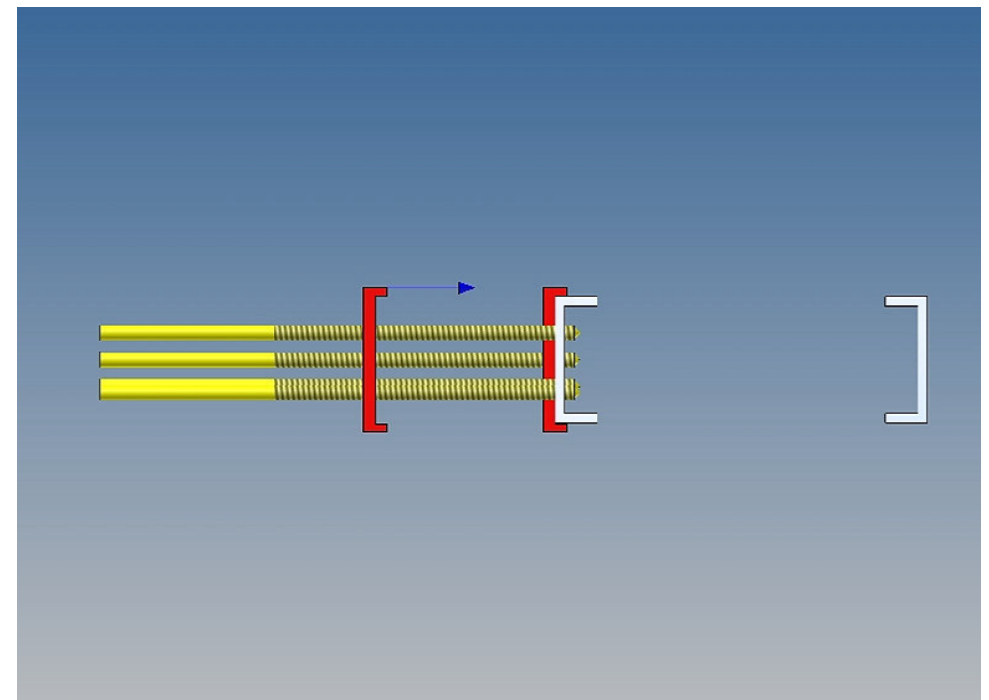
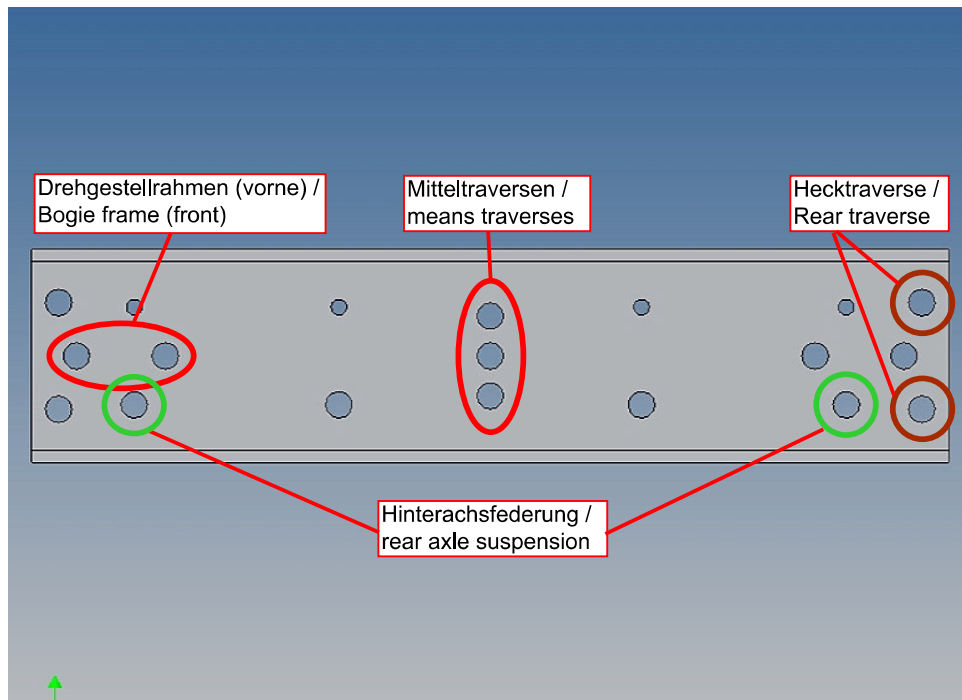
Vorderachse: waagerechte Federaufnahme /
Front axle: horizontal spring suspension

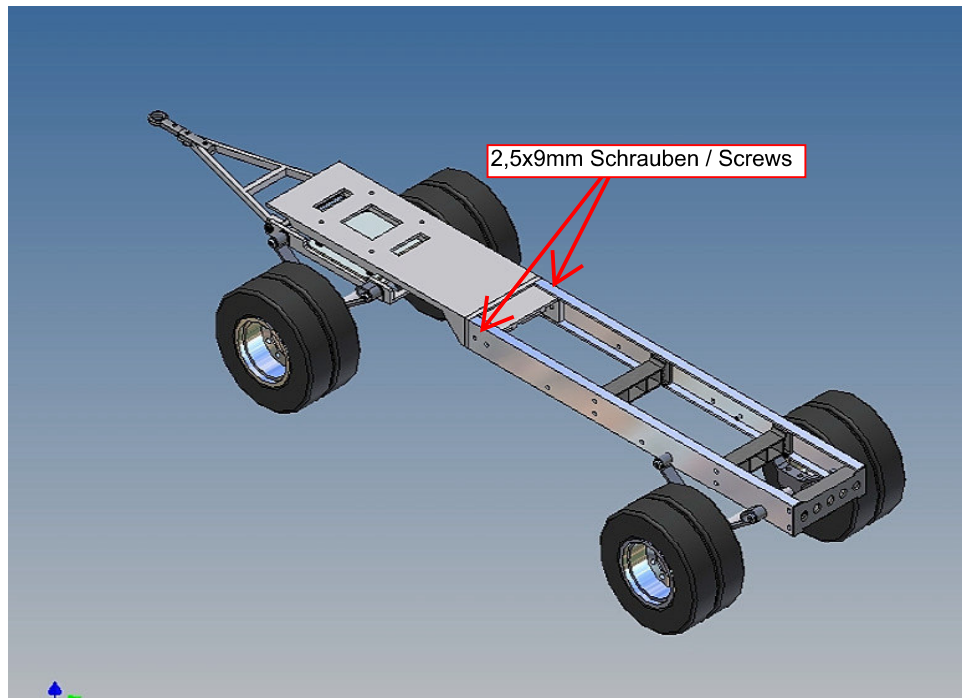
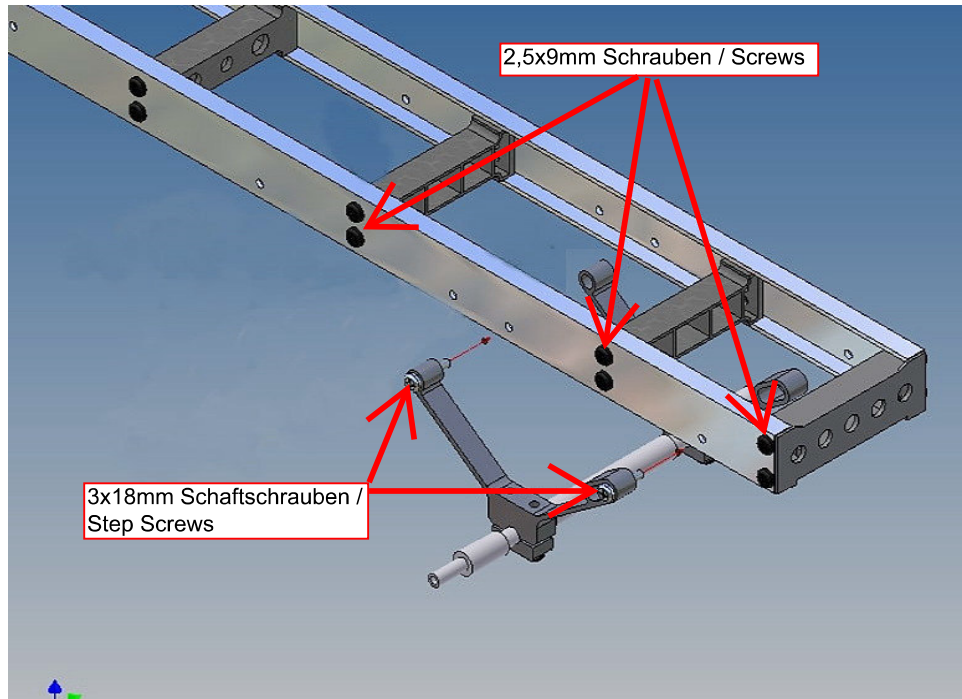


Zugöse je nach Zugmaultyp wählen /
Select the towing eye according to
the tow coupling type









Annotation:

Good luck and have fun - your MDTechShop team

www.MDTechShop.de

For questions or replacement part requests please send a short e-mail.

Warning:

This is not a toy! It contains small parts! Keep it away from young children!