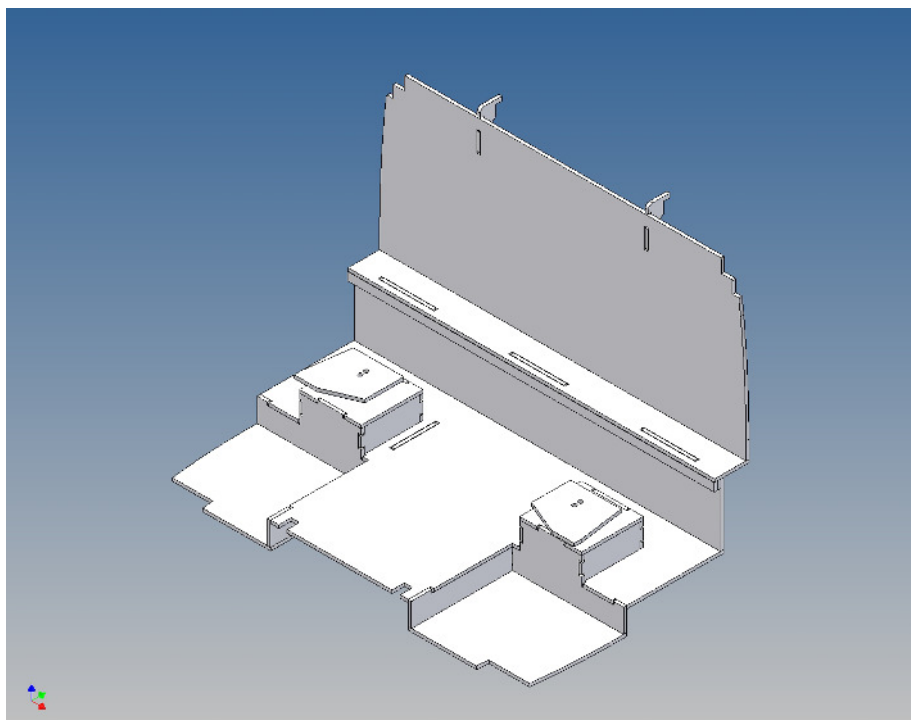


## Assembly Instruction

### Driving cab floor assembly kit for TAMIYA MAN TGX (1:14,5) - dividing wall -

**Best.-Nr.: 2014-9003-05**



**Version 1.0 – 01.06.2016**

## General Description

This kit includes parts for a driving cab floor for the TAMIYA MAN TGX 2-/3-axle (M 1:14,5).

The cab floor will be mounted under the original unit with drawers at the dashboard and hides the view onto the RC equipment through the windshield. The original platform above the electric motor should be removed, additionally we have an electronic box in our shop to optimize the space under the driver cabin for RC devices.

For positioning the driver cabin's tilt limiter we have put a template on the cabin floor, so that the tilt limiter rod is no longer visible inside of the cabin.

The seats are mounted on separate mounting kit and are screwed with the cab floor.

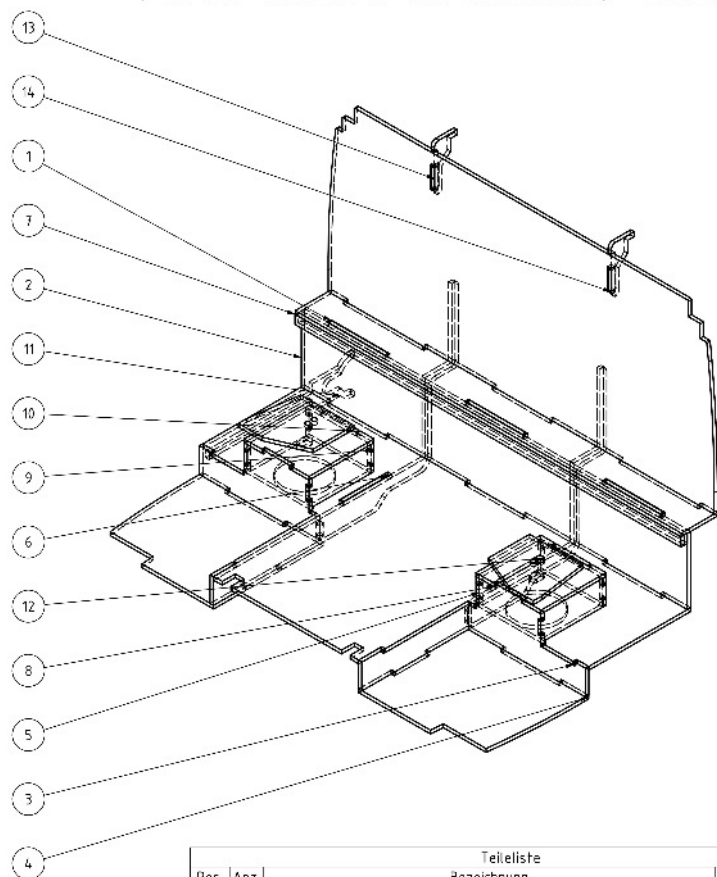
## Assembly Procedure

Before you put the parts together please read the assembly instructions carefully and pay attention to the assembly sequence and test the fitting accuracy of the parts before gluing them together.

It is helpful to fix the parts at first only on a few points with super-glue and after a check along the edges fully with super-glue or a polystyrene-glue.

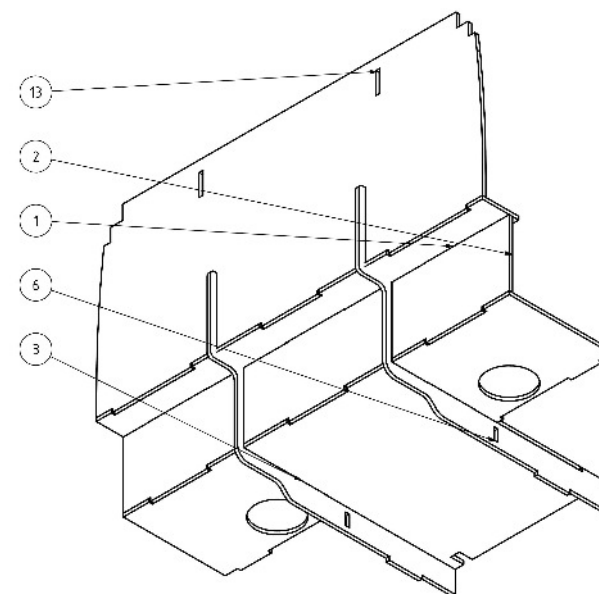
The parts are made of polystyrene, if you use super-glue in combination with activator spray, please be aware that the activator spray can destroy polystyrene – because of that you should use it very carefully or use only polystyrene-glue.

9003-05 Zusammenbau  
(FHB mit Sitzhalter und Trennwand) - Basisversion



Teilliste			Bemerkung
Pos.	Anz.	Bezeichnung	
1	1	01 Liegenboden (FHB mit Sitzhalter und Trennwand)	
2	1	02 Rückwand (FHB mit Sitzhalter und Trennwand)	
3	1	03 Bodenplatte (FHB mit Sitzhalter und Trennwand)	
4	2	04 Fußraumplatte (FHB mit Sitzhalter und Trennwand)	
5	2	05 Sitzhöcker teil vorn (FHB mit Sitzhalter und Trennwand)	
6	2	06 Seiten teil (FHB mit Sitzhalter und Trennwand)	
7	2	07 Aufdickungsleiste (FHB mit Sitzhalter und Trennwand)	
8	2	08 Sitzhöckerplatte (FHB mit Sitzhalter und Trennwand)	
9	4	09 Sitzhöcker teil längs (FHB mit Sitzhalter und Trennwand)	
10	2	10 Sitzhöcker teil hinten (FHB mit Sitzhalter und Trennwand)	
11	1	11 Gabel (FHB mit Sitzhalter und Trennwand)	
12	2	12 Paßstück für Sitzhalter (FHB mit Sitzhalter und Trennwand)	
13	1	13 Trennwand (FHB mit Sitzhalter und Trennwand)	
14	2	14 Trennwandraken (FHB mit Sitzhalter und Trennwand)	

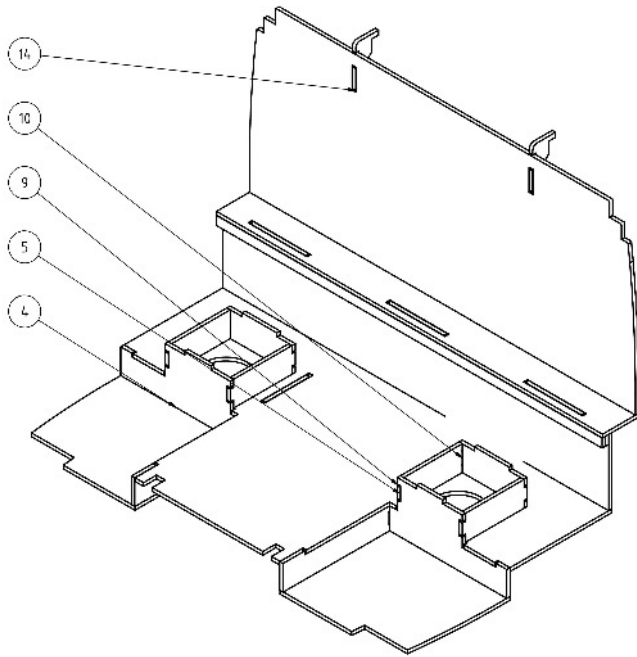
**Step 1:**



Glue the side parts (6) to the slots in part (3) right-angled and flush fitting and the small dividing wall (2) also right-angled and flush fitting to the floor part (3).

Now put the fake bed part (1) and the tall dividing wall (13) right-angled at the slots of part (1).

### Step 2:

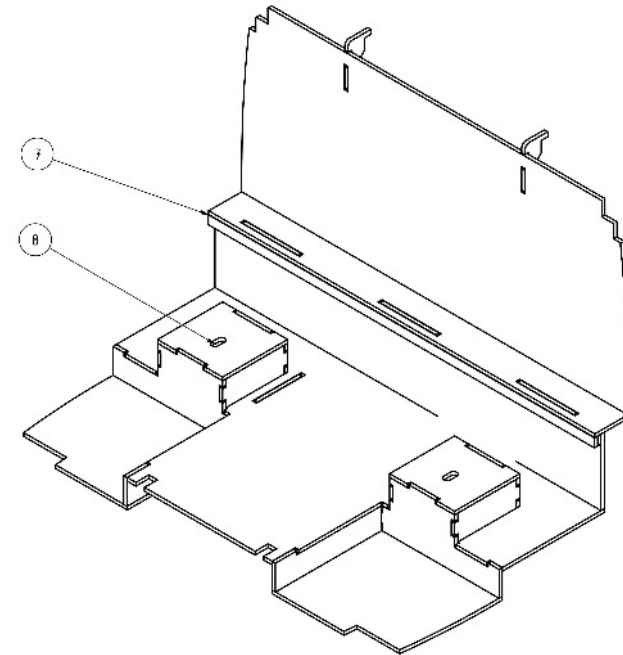


The two seat parts bumps (5) are each laterally correct fitting inserted and fixed in the slots of the side parts (6) and in the fitting grooves of the bottom plate (3). Then the four of seat parts along (9) and the seat parts (10) are fitted to a rectangular wall system. Here the seat plates (8) can be used as construction aid.

The two footwell plates (4) can then be glued to the correct position in each case with the seat part (5) and the side panel (6).

At the dividing wall above the two dividing wall hook (14) will now be glued at right angles from the rear.

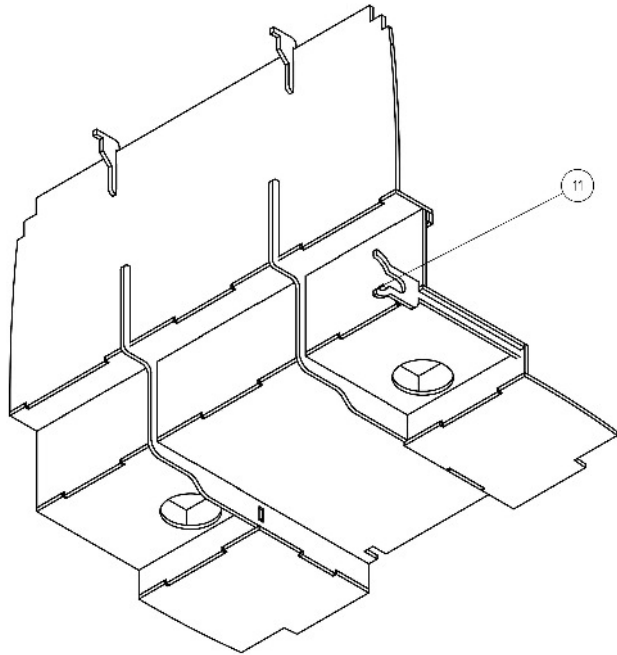
### Step 3:



For visual enhancement of the two bars (7) can be glued now on the small rear wall (2) superimposed.

The seat hump plates (8) can now be connected to the wall systems.

#### Step 4:



Glue the template (11) for the tilt limiter bearing with only some small glue points approx. 5 millimeters / 0.19 inch from the edge, after installation of the bearing it can later be removed again.

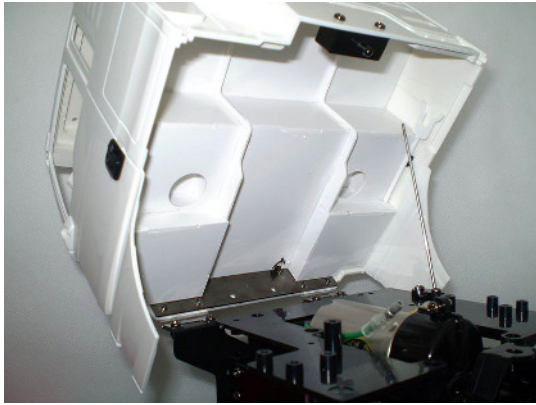


The figure above shows the use of the fork (11) it comprises the black bearings single for correct positioning and bonding in the cab. Picture similar.

Although it is not absolutely necessary, using the two adapters (12) are screwed into the original seat holders, the floor with the seat holders. These glue the moldings in the holder.



### Step 5:

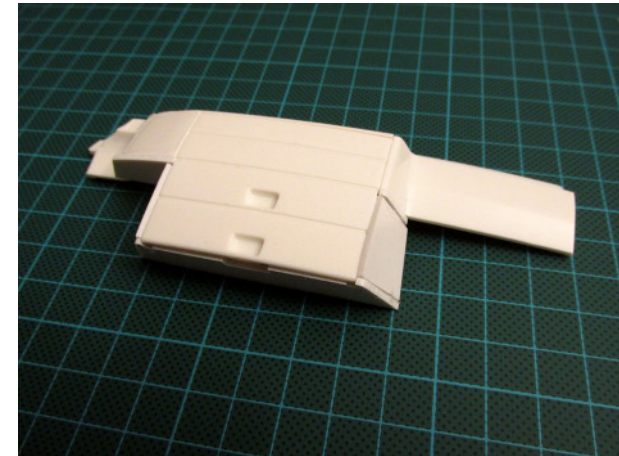


The cabin floor is now suspended from the bottom on the rear dividing hooks in the roof opening and launched forward along the body jaws (gently pressing enough). One sees above (fig. Similar) as the tilt limiter should be placed. Then the floor is screwed to the seat holders - done.

### Annotation:

For the base floor extension kit is available. It includes its own seat console and additional parts for drawer system in the dashboard. About the drawer system creates another opportunity for an attachment point between the floor and dashboard.

The original seat holder accounts and the separate seating consoles take over the fixing of seats, which can then also be moved individually to give more space to the new driver figure from Tamiya.



Good luck and have fun - your MDTechShop team

[www.MDTechShop.de](http://www.MDTechShop.de)

For questions or replacement part requests please send a short e-mail.

### Warning:

**This is not a toy! It contains small parts! Keep it away from young children!**